

TECHNICAL
SPECIFICATIONS

Product Code	PM060-HI99-PIH016
Dimension (mm) W x L x H	Ø16x9,7
Material	PMMA - PC
Fastening	Pin - Glue
Beam Angle	60°
Type	1 in 1
Optical Efficiency	%93
Rohs Complaint	Yes
LED Packages	3030, 3535, 5050

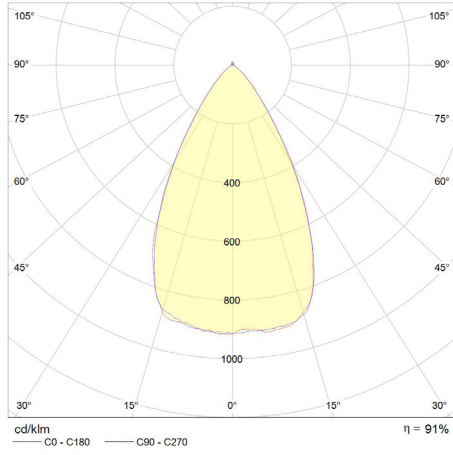
MATERIALS

PMMA clear, Non-yellowing for 10 years.
Yellowness Index (YI) according to the test standarts for Arizona/Florida outdoor exposure testing:
-YI 6 under hot/dry conditions
-YI 8 under hot/wet conditions

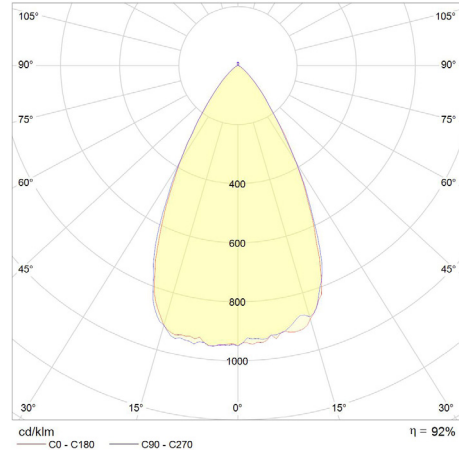
INSTRUCTIONS FOR USE &
MAINTENANCE

Working Temperature : -40° C ~ +90° C
Storage Temperature : -40° C ~ +90° C
Please handle or install lenses with wearing gloves.
Skin oils may damage lens or its optical characteristic.
Never use any commercial cleaning solvents on lenses , like alcohol.
If necessary, clean lenses wiht mild soap, water and soft cloth.

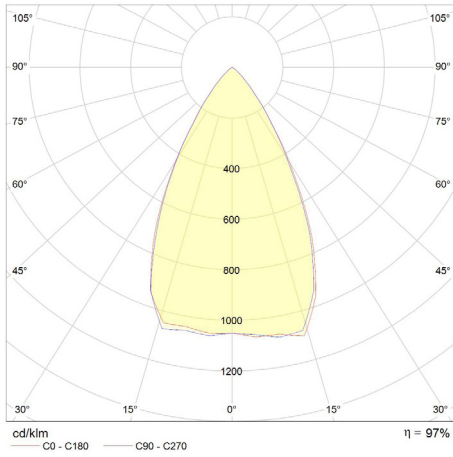
CREE XPG3



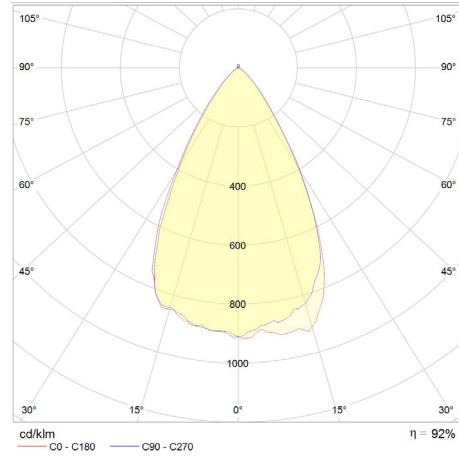
CREE XTE



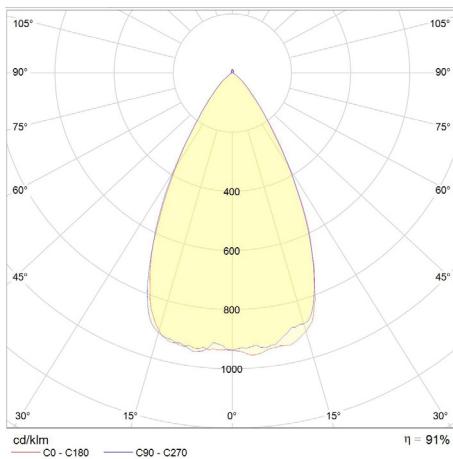
NICHIA 219D



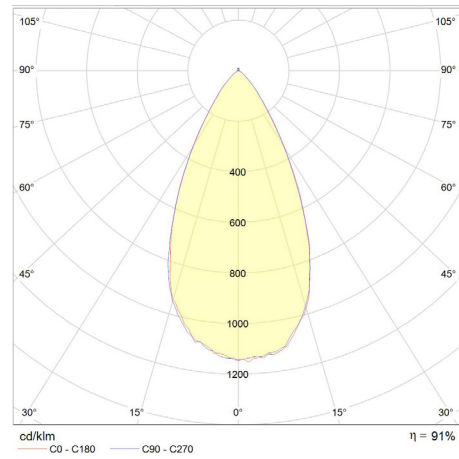
OSRAM OSLON SQUARE

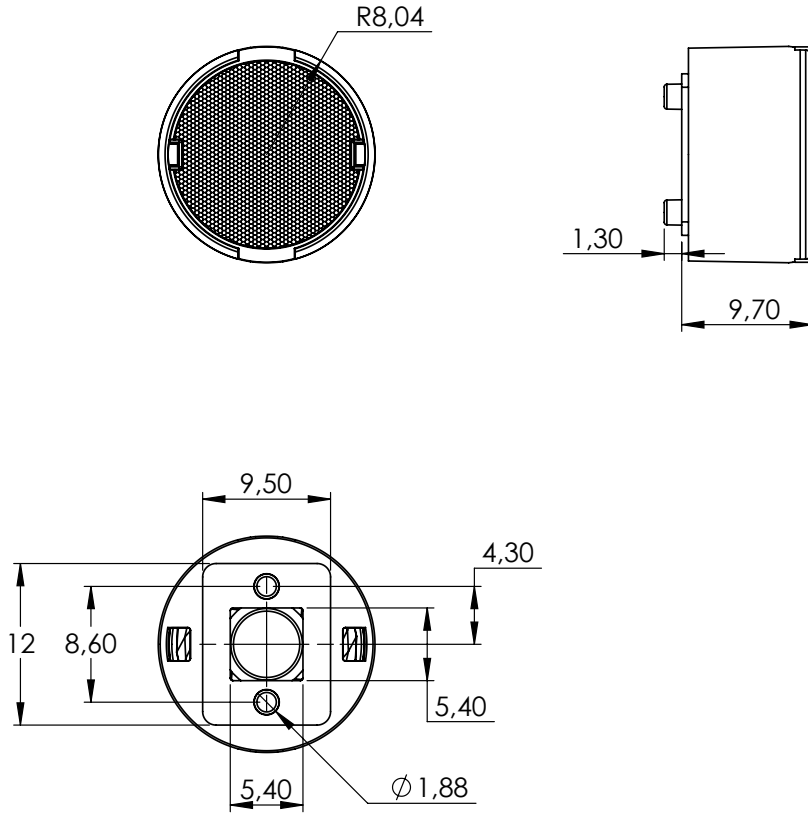



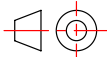
SAMSUNG LH351B



SEOUL Z5





	UNIT mm	PART NO: PM060-HI99-PIH016	 GENERAL TOLERANCES ± 0,2 MM	
	MATERIAL	PMMA-PC	REV.	REVISION
	WEIGHT	1,8 g	1	
	DATE	03.05.2021	2	
			3	
			FORM	A4
			SCALE	2:1
			PAGE	1 / 1

Box Size (mm) W x L x H	130x130x125
Box Weight	0,6 Kg
Box Quantity	330 pcs

